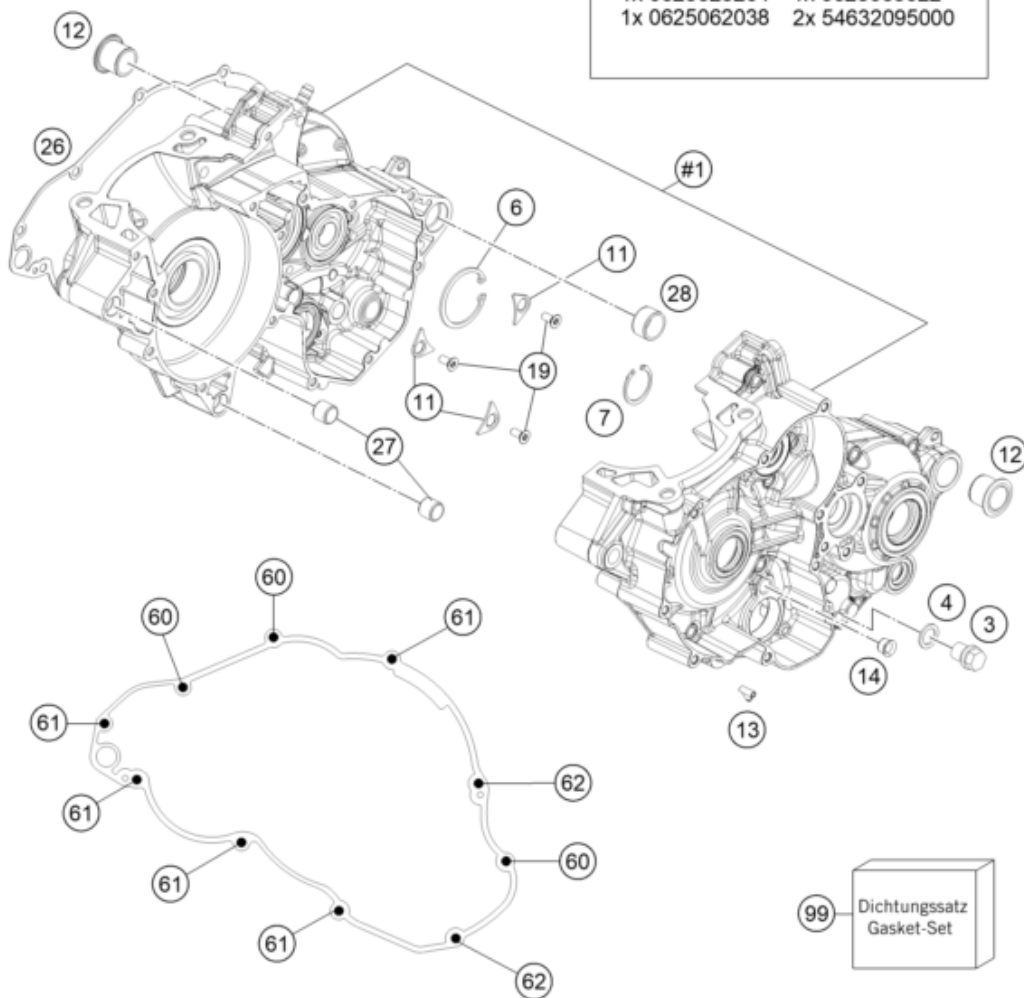


| | | | | |
|---------------------------------------|------------------|----|----|----|
| #1 | 3 | 4 | 11 | 12 |
| 14 | 19 | 27 | 28 | |
| + WELLENDICHTRINGE / SEAL RING | | | | |
| 1x 0760142460 | 1x 47030076100 | | | |
| 1x 0760253570 | 1x 0760324571 | | | |
| 1x 0760385273 | | | | |
| + LAGER / BEARINGS | | | | |
| 1x 56530123200 | 1x 79234012010 | | | |
| 1x 0625160040 | 1x 0625006065 | | | |
| 1x 49030023000 | 1x 0410002500700 | | | |
| 1x 55430058000 | 1x 0625062054 | | | |
| 1x 0625623204 | 1x 0625063022 | | | |
| 1x 0625062038 | 2x 54632095000 | | | |



| Pos | Part Number | Description | Additional Text | Quantity |
|-----|--------------|--------------------------------|-----------------|----------|
| 1 | A44030000044 | Engine case cmpl. | | 1.00 |
| 3 | 58030021100 | oil drain plug with magnet | | 1.00 |
| 4 | 58038022000 | CU-seal ring DIN7603-12X18X1.5 | | 1.00 |
| 6 | 0472042175 | CIRCLIP DIN0472-42X1,75 | | 1.00 |
| 7 | 55430059100 | CIRCLIP DIN0472-28X1,2 | | 1.00 |
| 11 | 75030085100 | Retaining bracket crankshaft b | | 3.00 |
| 12 | 79230010000 | Housing bush | | 2.00 |
| 13 | 45130022000 | ANGLE PIECE 50CCM LC 2001 | | 1.00 |
| 14 | 55540031000 | Collar bushing | | 1.00 |
| 19 | 0019050121S | INT. TORX FLAT HEAD M5X12 T25 | | 3.00 |
| 26 | A44030025000 | Clutch cover gasket, inner | | 1.00 |
| 27 | 54630027000 | DOWEL BUSHING 13,8X11X12 | | 2.00 |

| | | | | |
|----|--------------|------------------------------|--|-------|
| 28 | 54830027100 | Dowel, 21x12 | | 1.00 |
| 60 | 0025060606 | HH collar screw M6x60 TX30 | | 4.00 |
| 61 | 0025060456 | HH COLLAR SCREW M6X45 TX30 | | 10.00 |
| 99 | A44030099000 | Gasket kit Engine MX 250/300 | | 0.00 |