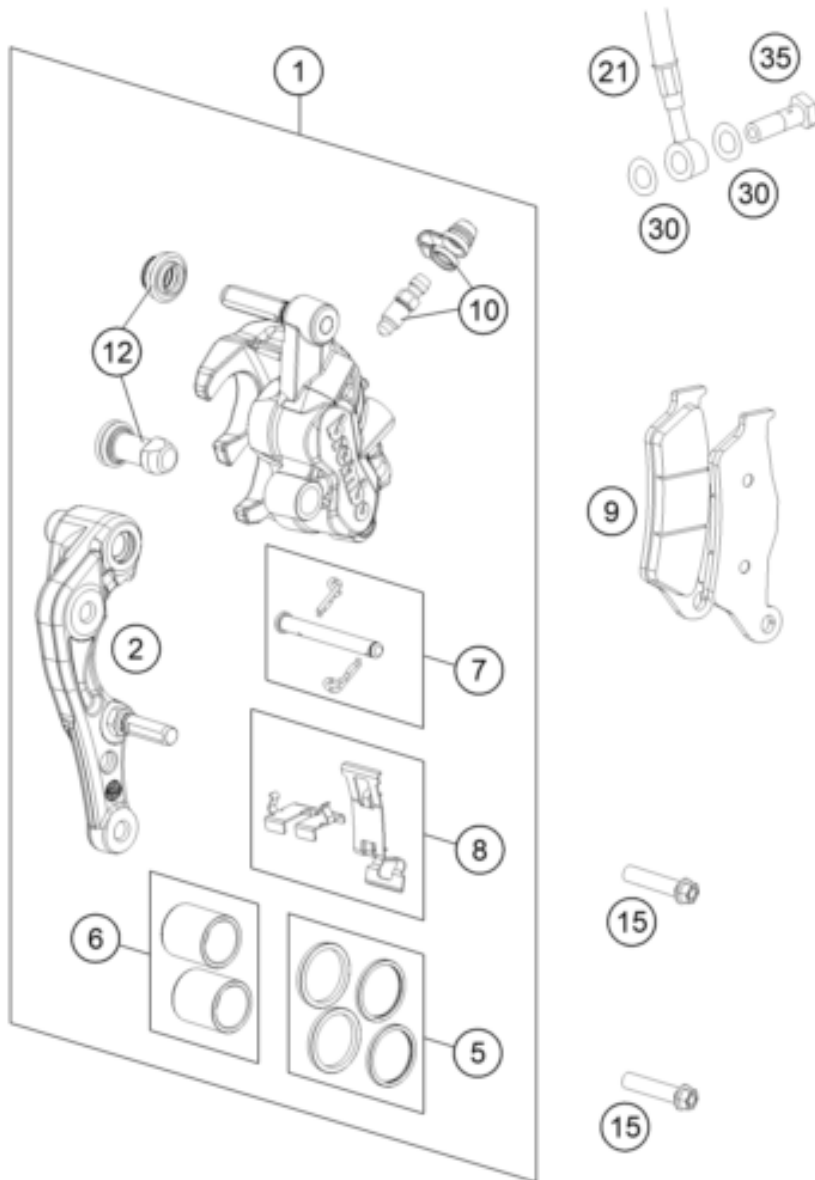


ACHTUNG !!!
Nur für Brembo!



CAUTION !!!
For Brembo only!



| Pos | Part Number | Description | Additional Text | Quantity |
|-----|---------------|--------------------------------|-----------------|----------|
| 1 | 7701301500101 | CALIPER NAT. WITHOUT PADS | | 1.00 |
| 2 | 77013014000 | BRAKE CALIPER SUPPORT FRONT 09 | | 1.00 |
| 5 | 77013021000 | REP. KIT SEALS 24MM | | 1.00 |
| 6 | 77013019000 | REP. KIT PISTON 24MM | | 1.00 |
| 7 | 77013017000 | BOLT CPL. 09 | | 1.00 |
| 8 | 77013018000 | RETAINING PLATE SET BREMBO | | 1.00 |
| 9 | 77713030000 | Brake pad front | | 1.00 |
| 10 | 61013020100 | BLEEDER SCREW WITH CAP | | 1.00 |
| 12 | 54613218100 | CUP SET SHORT | | 1.00 |
| 15 | 0025080306S | HH COLLAR SCREW M8X30 TX40 | | 2.00 |
| 21 | 59013010000 | Brakeho. Front 1235mm 2000 | 125-380 SX | 1.00 |

| | | | | |
|----|-------------|-------------------------------|---------------------------|------|
| 30 | 0603100141 | sealing ring DIN 7603 10x14x1 | ONLY FOR LC4 ADVENTURE | 2.00 |
| 35 | 50213025000 | HOLLOW SCREW M10X1X19 | FC, FE+FS (USA) | 1.00 |